



MACQUARIE
University
SYDNEY · AUSTRALIA

A world-class career

DEPUTY DEAN, EDUCATION AND EMPLOYABILITY



Macquarie University

A WORKPLACE LIKE NO OTHER



Dear colleague

Thank you for your interest in this position.

The world is changing at a pace never seen before, driven by social, technological and economic challenges. Within this rapidly transforming landscape, the university sector is challenged to operate in ways that support and adapt to both continuous and transformational change, and to do so in a socially and environmentally sustainable way.

The Faculty of Science and Engineering at Macquarie University is purpose-driven. We are determined to lead positive change for our students, staff and partners by focusing on social and environmental sustainability in both our education and research.

We think of education as the great equaliser and a way of underpinning social sustainability. As such, we are working towards a personalised education experience delivered online and in person to give all our students, independent of their background, a chance of sustained success in their chosen careers when studying with us.

We are taking responsibility for environmental sustainability, now and into the future, by aligning our curriculum with the United Nations Sustainable Development Goals and by focusing on the science and technologies that will deliver a sustainable and attractive future. We aim to be the best for the world.

We are collaborating with the University's other faculties to supplement our STEM-focused curriculum. We believe that a STEM graduate benefits from also having a breadth of basic knowledge spanning diverse disciplines and must be able to think critically and rapidly learn new skills. We believe that a cross-faculty engaged curriculum equips our graduates with the skills they need for their future careers.

We are seeking a person to lead the development of a state-of-the-art curriculum to arm our graduates with the skills they need to meet any challenge thrown at them in a rapidly changing world. The successful applicant will have the outstanding leadership skills to bring faculty staff along a never-ending journey.

Macquarie University is establishing itself as a leader in equality and inclusion, and we have been recognised for our progress in shaping a welcoming, diverse and inclusive organisation. We are proud to be recognised as an Employer of Choice for Gender Equality by the Workplace Gender Equality Agency for our progress towards gender equity, and we are focused on long-term systemic change.

We look forward to welcoming you.

Professor David Coutts
INTERIM EXECUTIVE DEAN
FACULTY OF SCIENCE AND ENGINEERING
MACQUARIE UNIVERSITY

Acknowledgement of Country

We acknowledge the Traditional Custodians of the land upon which the Macquarie University Wallumattagal Campus is situated, the Wallumattagal people of the Dharug Nation, whose cultures and customs have nurtured, and continue to nurture, this land since the Dreamtime. We pay our respects to the Dharug people and the Wallumattagal Clan. We also wish to acknowledge and pay our respects to the Elders of the Dharug Nation – past and present.

In paying our respects, we recognise that we are following in the footsteps of those who came long before us. As a faculty that aspires to promote sustainability, we understand that real sustainability is having the knowledge and wisdom to live on these lands for tens of thousands of years in partnership with nature.

Although those are time frames that none of us can grasp, we are inspired by Australia's First Peoples to live and work sustainably for the long-term future.

The University continues to develop respectful and reciprocal relationships with First Nations Peoples in Australia and with Indigenous people throughout the world.



Who we are

The Faculty of Science and Engineering undertakes a broad range of research and teaching activities at the highest national and international levels. We offer undergraduate and postgraduate degrees across a diverse range of disciplines.

Our passionate staff and engaged students are dedicated to advancing science and engineering. The faculty has more than 600 staff (academic, professional and technical), 6000 students (equivalent full-time student load) and 400 higher degree research students. In 2022, our annual budget is approximately \$136 million, and we receive \$40 million in Higher Education Research Data Collection (HERDC) research income.

Our collaborative education and research partnerships extend not only across every faculty at Macquarie but also throughout the world. We continue to establish and strengthen links with industry by building partnerships with commercial, government, cultural and professional organisations. For example, Macquarie is now host to the Australian Research Council (ARC) Training Centre for Facilitated Advancement of Australia's Bioactives. This training centre will help Australia make the most of the growing global market for bioactive ingredients and brings together universities in Australia, the United Kingdom, Germany and Brazil, and 14 respected industry partners.

>600

academic, professional and technical staff

6000

equivalent full-time student load students

400

higher degree research students

\$136M

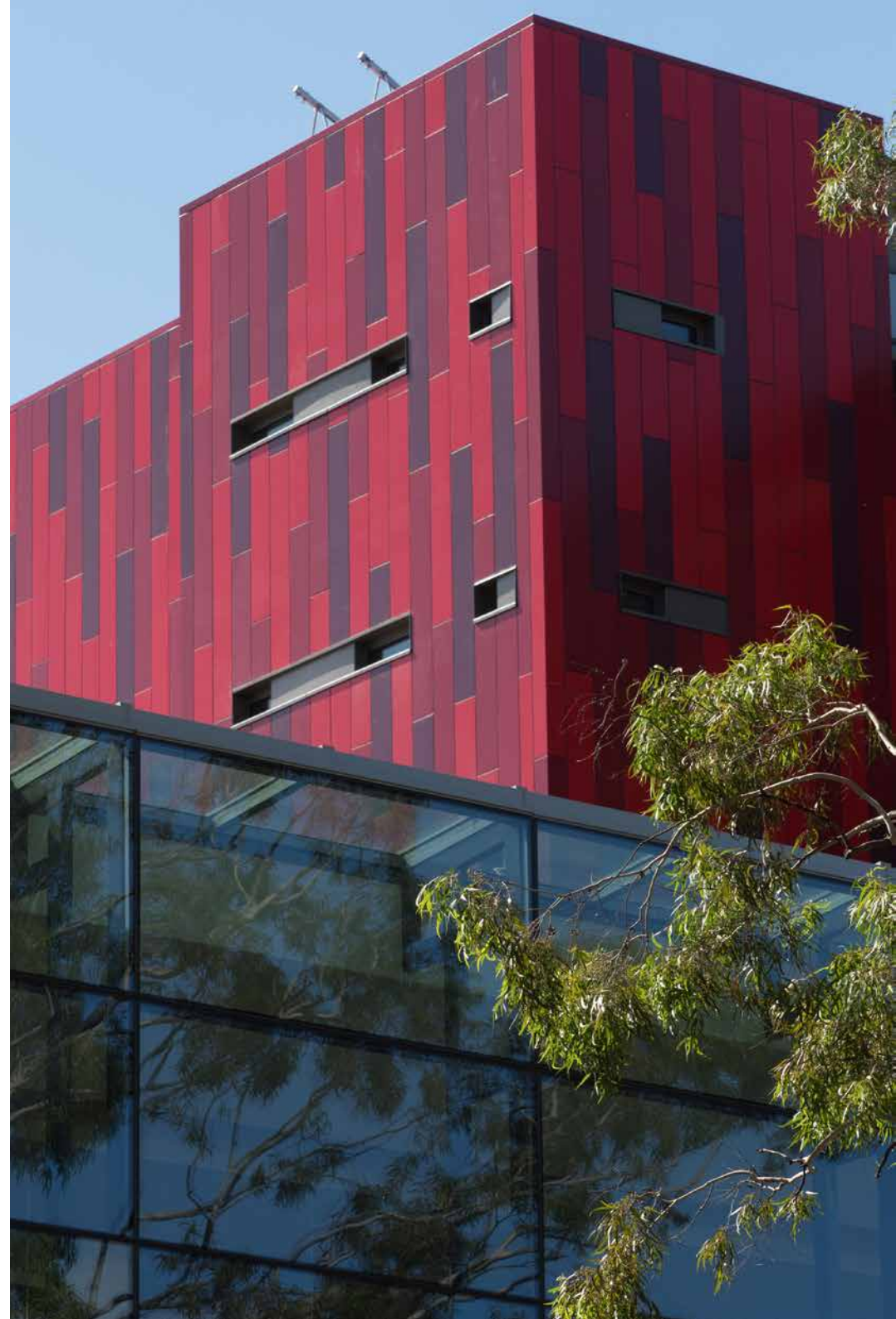
annual budget in 2022

\$40M

HERDC research income

14

respected industry partners



About the faculty

OUR PURPOSE

We believe in education as an equaliser enabling our students to reach their full potential. We aim to be the best for the world, working with our communities to discover, innovate and build the new economy with environmental and social sustainability at the core.

OUR SCHOOLS

- School of Computing
- School of Engineering
- School of Mathematical and Physical Sciences
- School of Natural Sciences

OUR RESEARCH DEPARTMENTS

- Applied BioSciences
- Australian Astronomical Optics – Macquarie

OUR WORLD-CLASS RESEARCH CENTRES

- ARC Centre of Excellence for Engineered Quantum Systems
- ARC Centre of Excellence in Synthetic Biology
- ARC Centre for Fruit Fly Biosecurity Innovation
- ARC Industrial Transformation Training Centre for Facilitated Advancement of Australia's Bioactives
- Macquarie University Cyber Security Hub

OUR MISSION AND VISION STATEMENT

We believe in the power of STEM to engage minds and change lives.

OUR STRATEGIC GOALS

- Equip our STEM graduates with the fundamental skills, knowledge and ability to adapt to and prepare for their careers.
- Work with our communities and industry, using our capacity and capabilities, to innovate for the future.
- Discover and build the new economy with environmental and social sustainability.
- Grow and engage with our current and future partners.



Who we are looking for

KEY ACCOUNTABILITIES

- The Deputy Dean, Education and Employability, reports to the Executive Dean, Faculty of Science and Engineering, and is a member of the Faculty Executive and the newly formed University Education Strategy Committee. This leadership role will ensure the highest standards of learning and teaching, and engagement in service of the faculty's and the University's objectives and ambitions, as outlined in the University's *Operating Plan 2020–2024*.
- In a rapidly changing external and internal environment, the role requires an open and flexible attitude, along with the ability to implement new and best educational practices. The role will ensure we are at the leading edge of STEM education to enable our students' success in their careers.
- Therefore, a key aspect of leadership in the role will be to foster a culture of unity and growth, particularly within a changed school structure in the faculty. Performance in this role will, to a significant extent, be measured on the person's ability to lead and mentor colleagues to learn and grow in a rapidly changing environment.
- This role is responsible for the strategic development and management of learning and teaching plans, educational activities and teaching quality for the faculty. The role also provides senior leadership for associate deans and professional staff in the delivery and ongoing development and management

of educational services – including curriculum and assessment, academic governance, teaching quality, student recruitment and admissions, academic integrity and student discipline, and accreditation activities as well as school/department reviews.

- As a member of the Faculty Executive and the University Education Strategy Committee, your key responsibility will be to build effective relationships with deputy deans and associate deans from other faculties, faculty heads of schools and departments, school directors of education, course directors, other deputy deans and associate deans, as well as the deputy vice-chancellor and vice-president portfolios and colleagues in the Academic Senate to progress the University's educational mission.

LOCATION

Macquarie University
Wallumattagal Campus
North Ryde, Sydney, Australia

REPORTS TO

Executive Dean, Faculty of Science and Engineering

DIRECT REPORTS

Associate Dean, Curriculum and Learning
Associate Dean, Learning Innovation



Selection criteria

To be considered for the position of Deputy Dean, Education and Employability, you will demonstrate most or all of the following selection criteria in a curriculum vitae and supporting documents providing examples of relevant experience and achievements.

- Demonstrated experience as a senior member of academic staff with a strong understanding of undergraduate and postgraduate education and student outcomes
- Demonstrated strong understanding of state-of-the-art curriculum and pedagogy development with a focus on quality and successful student learning outcomes
- A vision for the future of undergraduate, postgraduate and micro-credentialed education in the faculty and Macquarie University consistent with the faculty's and the University's strategic frameworks
- Demonstrated ability to develop, communicate and implement an impactful vision and strategy for diverse student cohorts
- Demonstrated success in identifying, building and sustaining effective relationships with multiple internal and external stakeholders
- Superior negotiation and influencing skills
- Proven record of outstanding accomplishment in teaching, and a record of impactful research in STEM education is desirable
- Demonstrated ability to lead and mentor teams to achieve strategic and operational goals
- Demonstrated ability to build collegial leadership and actively contribute to institution building and nurturing of positive internal relationships



Where you will work

A PLACE OF INSPIRATION

Uniquely located in the heart of Australia's largest high-tech precinct, Macquarie brings together more than 45,000 students and 3400 staff in one thriving hub of discovery. Our campus spans 126 hectares, with open green space that gives our community the freedom to think and grow.

More than A\$1 billion has recently been invested in our facilities and infrastructure, so our students and staff can thrive in an environment that is both inspiring and switched on to the latest digital technologies. With more than 300 leading companies located on or around our campus, our students are able to tap into industry connections that give them an edge in their future careers, while our staff have access to outstanding research and innovation opportunities with some of the world's leading organisations.

RENOWNED FOR EXCELLENCE

Despite its youth, the University has risen to be a progressive and influential institution, and is highly regarded both locally and internationally.

Ranked among the top one per cent of universities in the world, we produce graduates who are among the most sought-after professionals in the world.

With our tradition of innovation and exploration, we continue to break new ground, ranking among the top 100 institutions in the world for earth sciences, ecology, education, geography, psychology and telecommunication engineering.

A PROUD TRADITION OF DISCOVERY

Our University is bold and innovative. Unconstrained by tradition, we take a pioneering approach to research. Such an approach is largely responsible for our enviable reputation for research excellence – 98 per cent of our research is ranked at world standard or above, and more than 100 of our researchers are ranked in the top one per cent of researchers in the world.

Our Research Strategy 2025 is brought to life by renowned researchers, whose audacious solutions to issues of global significance benefit the world we live in.

Looking to the future, we have developed five research priorities – Healthy People, Resilient Societies, Prosperous Economies, Secure Planet, Innovative Technologies – that provide a focal point for the cross-disciplinary research approach that is at the heart of our ethos.



Our purpose, vision and values

At Macquarie, we are not afraid to choose the less trodden path. We see life as an exhilarating source of possibilities to grow intellectually and professionally, unconstrained by traditions. We are ready to embrace new experiences and ideas.

We believe that a leader is about being a team player and know that success in today's world is all about collaborating with the right people on the right issues.

We are naturally curious and open to the most diverse intellectual perspectives. United by a sense of purpose, a single vision and one set of values, we actively engage in the complex issues that define the future of humanity.

UNITED BY ONE PURPOSE

We are a university of service and engagement:

- We serve and engage our students and staff through transformative learning and life experiences.
- We serve and engage our world through discovery, dissemination of knowledge and ideas, innovation and deep partnerships.
- Our University is a place for staff and students to be nurtured and to grow, develop, learn and explore.

SHARING ONE VISION

We aspire to be:

- a destination of choice for students and staff who share our values
- deeply connected with our stakeholders and partners and known for this globally
- ranked among the highest-performing research universities in Australia and, for key disciplines, recognised globally for our pre-eminence
- known across Australia and beyond as custodians of a remarkable university campus that blends the vibrancy of a cosmopolitan university village with a natural Australian bushland setting.

EMBODYING ONE SET OF VALUES

We value:

- **Scholarship** – We believe learning, inquiry and discovery improve lives.
- **Integrity** – We conduct ourselves ethically, equitably and for mutual benefit.
- **Empowerment** – We make our community a source of strength and creativity.

Through our actions as students and staff, we live these values and it is against them that we hold ourselves accountable.



Macquarie at a glance



RANKED AMONG THE TOP 1%

of universities in the world
(QS World University Rankings, 2022)



MORE THAN 40,000 WORK PLACEMENTS

or community experiences through our
PACE (Professional and Community
Engagement) partnerships



MORE THAN 4000 PARTNER ORGANISATIONS

across Australia and around the
world, providing access to industry
contacts that help develop
valuable employability skills



ONLY UNIVERSITY IN AUSTRALIA

with its own metro station



LOCATED IN SYDNEY'S LARGEST BUSINESS PRECINCT

only 15 kilometres from the
Sydney CBD



MORE THAN 200 PARTNER UNIVERSITIES

for student exchange in more
than 40 countries



MORE THAN 45,000 CONNECTED STUDENTS

from more than 119 countries



\$1 BILLION INVESTED TO CREATE A COLLABORATIVE CAMPUS

with world-class facilities
and infrastructure



OUR CAMPUS

is set on 126 hectares of
stunning parkland



215,000 ALUMNI IN OUR INTERNATIONAL COMMUNITY

from more than 140 countries



3 SUBJECTS

ranked in the top 50 globally
and 11 in the top 100

(QS World University Rankings by Subject, 2022)



RANKED #1 IN SYDNEY

for graduate employment rate

(QS Graduate Employability Rankings, 2022)



AUSTRALIA'S FIRST FULLY INTEGRATED HEALTH PRECINCT

centred around our on-campus hospital



40+ SINGLE BACHELOR DEGREES

many of which are designed
in consultation with industry

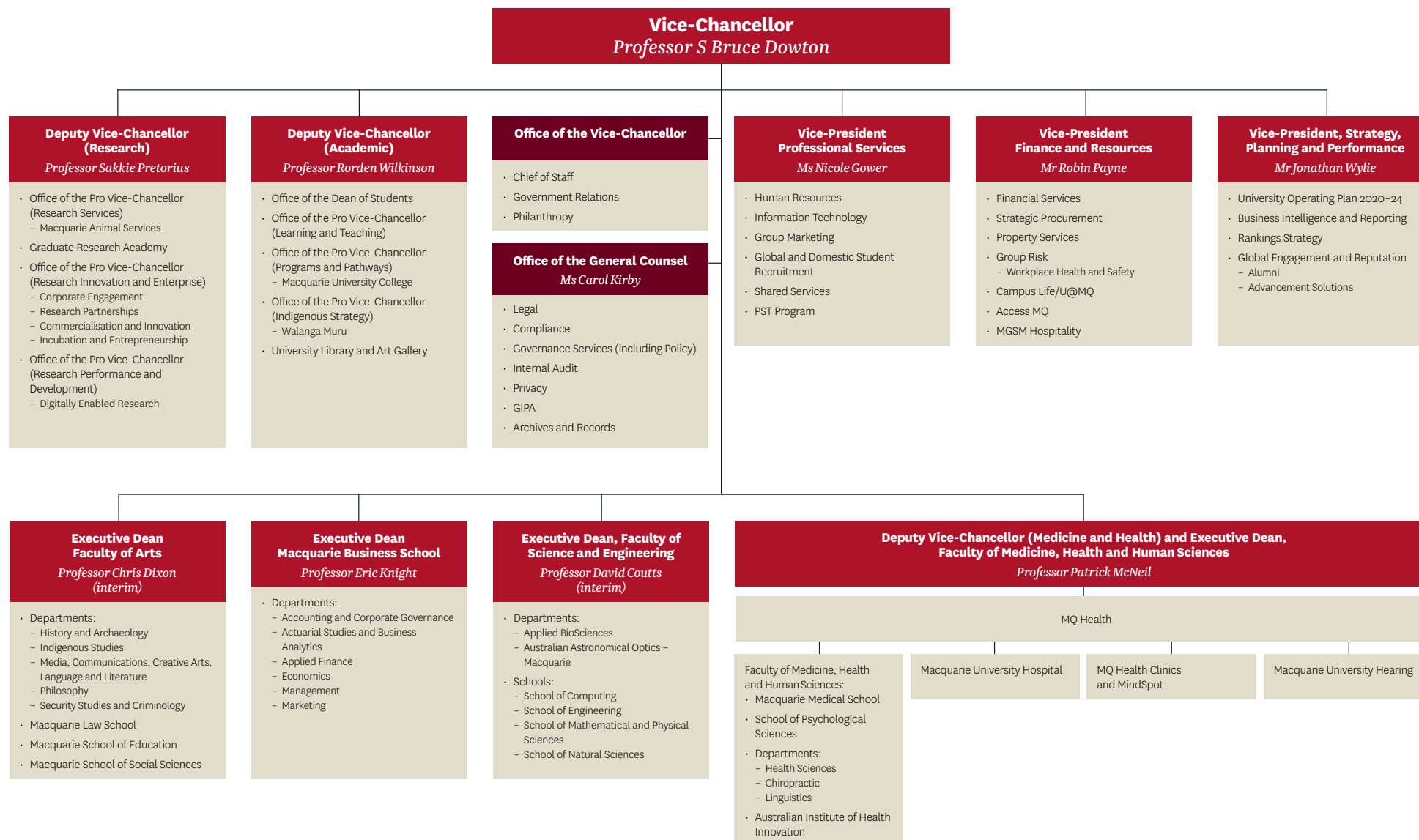


100% OF RESEARCH ACTIVITY

rated at world standard or above

(Excellence in Research for Australia, 2018)

Organisation chart



How you can apply

APPLICATIONS

For more information and initial enquiries, email Zoe Hinton (zoe.hinton@perrettlaver.com) from the executive search firm Perrett Laver. To apply for the position, upload your curriculum vitae and supporting covering letter at perrettlaver.com/candidates and quote '6097'.

The closing date for applications is midnight (AEDT) on Wednesday 5 October. Interviews are expected to be held in November 2022.

This position requires a criminal record check.

SUBMIT THE FOLLOWING INFORMATION IN YOUR APPLICATION:

RÉSUMÉ

Candidates are asked to set out in a résumé their most recent and significant career appointments and achievements – including details of leadership, management and professional experience; publications and grants; and contributions to professional associations, societies and community activities.

CANDIDATE STATEMENT

In no more than five pages, outline what you can bring to this position and what you hope to accomplish, as well as reflect on your experience in the context of the selection criteria.

Macquarie University's goal is to increase the proportion of women, Aboriginal and Torres Strait Islander peoples, and diverse peoples of all backgrounds in STEM roles. Applications are considered holistically, and candidates are encouraged to apply even if they may not feel strong on each selection criterion. For more information, visit our Equity, Diversity and Inclusion page staff.mq.edu.au/work/diversity

PHOTOS: Christina Fiorini, Morris McLennan, Chris Stacey and Joanne Stephan

CRICOS Provider 00002J
(HRE247911)

